

Integrating Enterprise Architecture

Voytek Janisz



PROGRESSIVE

Enterprise Architecture

“The process of translating business **vision and strategy** into effective enterprise change by creating, communicating, and improving the **key principles and models** that describe the enterprise’s future state and enable its evolution.” (Gartner Group)

“A coherent whole of **principles, methods, and models** that are used in the design and realization of an enterprise’s organizational structure, business processes, information systems, and infrastructure ”(The ArchiMate Foundation)

“The **fundamental organization** of a system, embodied in its components, their relationships to each other and the environment, and the **principles governing** its design and evolution.” (ANSI/IEEE)

Organization

- » \$17B revenue / 26,000 employees
- » 3,000 IT personnel / 100 Architects
- » 25 Architecture domains
- » 5 Architecture Boards
- » 800 applications
- » 400 architecturally significant projects



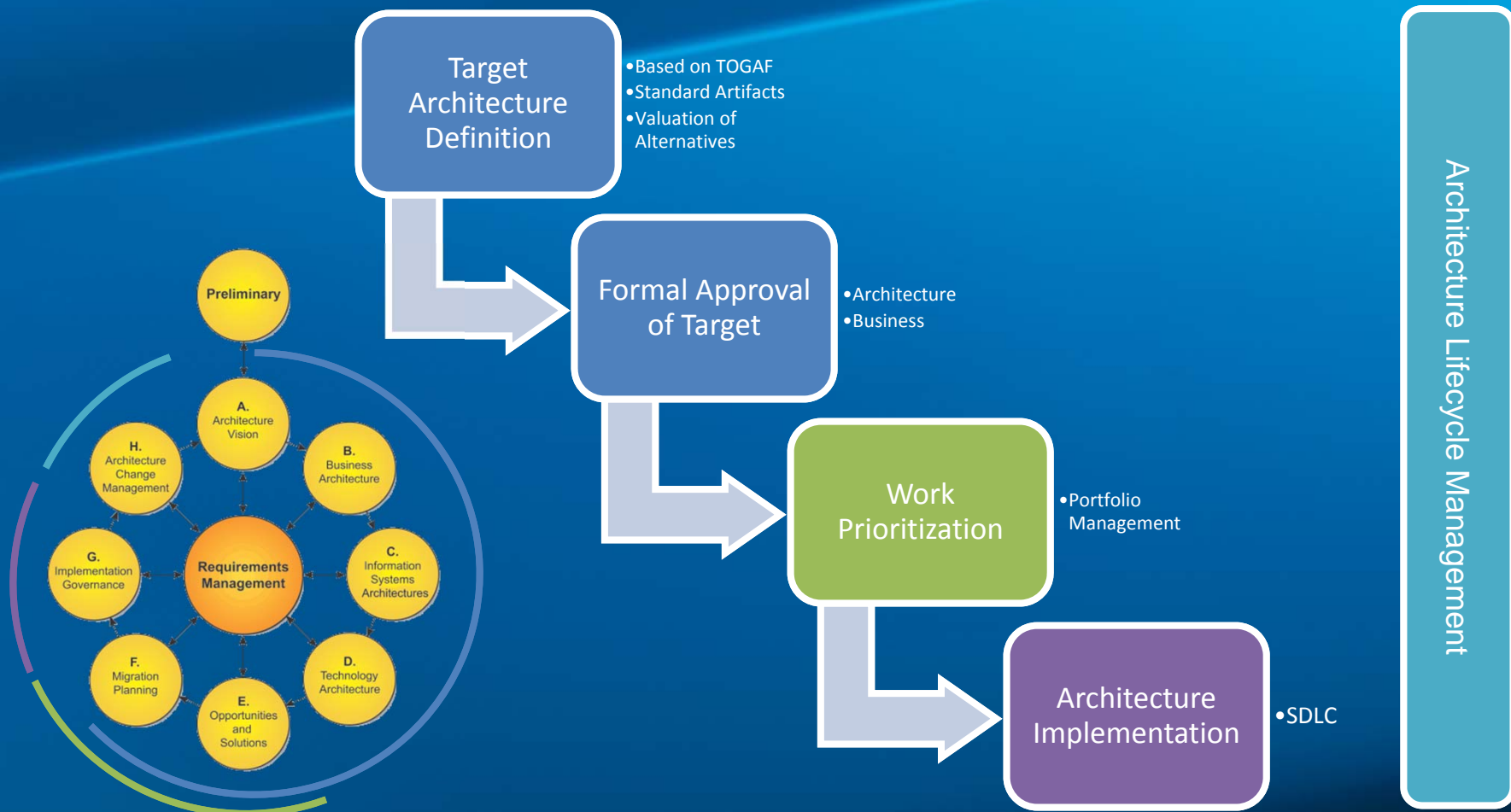
PROGRESSIVE

Challenges

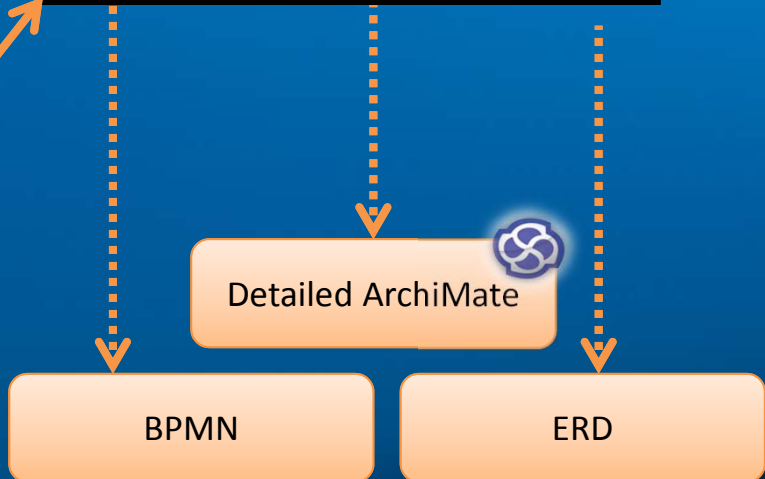


PROGRESSIVE

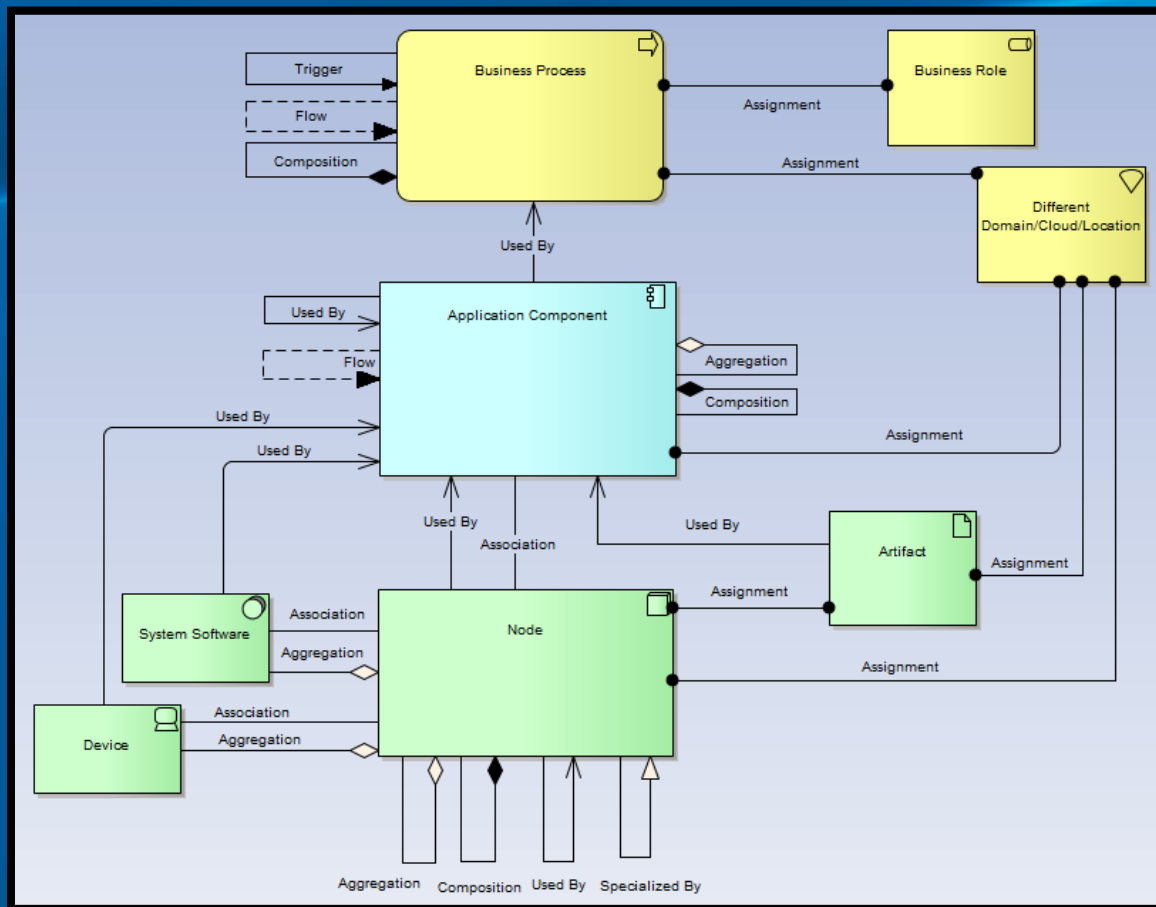
Architecture Definition



The screenshot shows the homepage of the Enterprise Software Services & Architecture Progressive Architecture Repository (PAR). The header includes navigation links like Site Actions, Browse, and Pages. The main content area features a large heading "About the PAR" and several colored boxes representing different sections: Progressive Architecture Description, Architecture Governance, Reference, and Standards. A sidebar on the left lists various topics such as Progressive Architecture Description, Domain and Platforms, Business Application Portfolio, Enterprise Architecture Model, Domain Target Architecture Topics, Architecture Roadmap, Technology Roadmaps, Product Catalog, Architecture Governance, Architecture Governance Site, Solution Submission, Reference, Guidance Catalog, EA Modeling and Analysis, EA Principles, Standards, Reuse Bin, and All Site Content. On the right, there's a search bar, user information (I am E. Hushack - Staut), and a section titled "For best results when searching:" which provides instructions on how to use the PAR search function. Below this are quick links to info outside the PAR, a Wika section with links to Domains, Subdomain Architectures, Security Architecture (United Access), and Technology Architecture. There's also a Tool Sites section listing Enterprise Tools Portal, EAuent, Liberate Tools, Tools Simplification, and Patterns Sites with links to Domain Pattern Site, Design, Collaboration, Policy Serving, Quoting, Networks, and Business Guiding Principles.

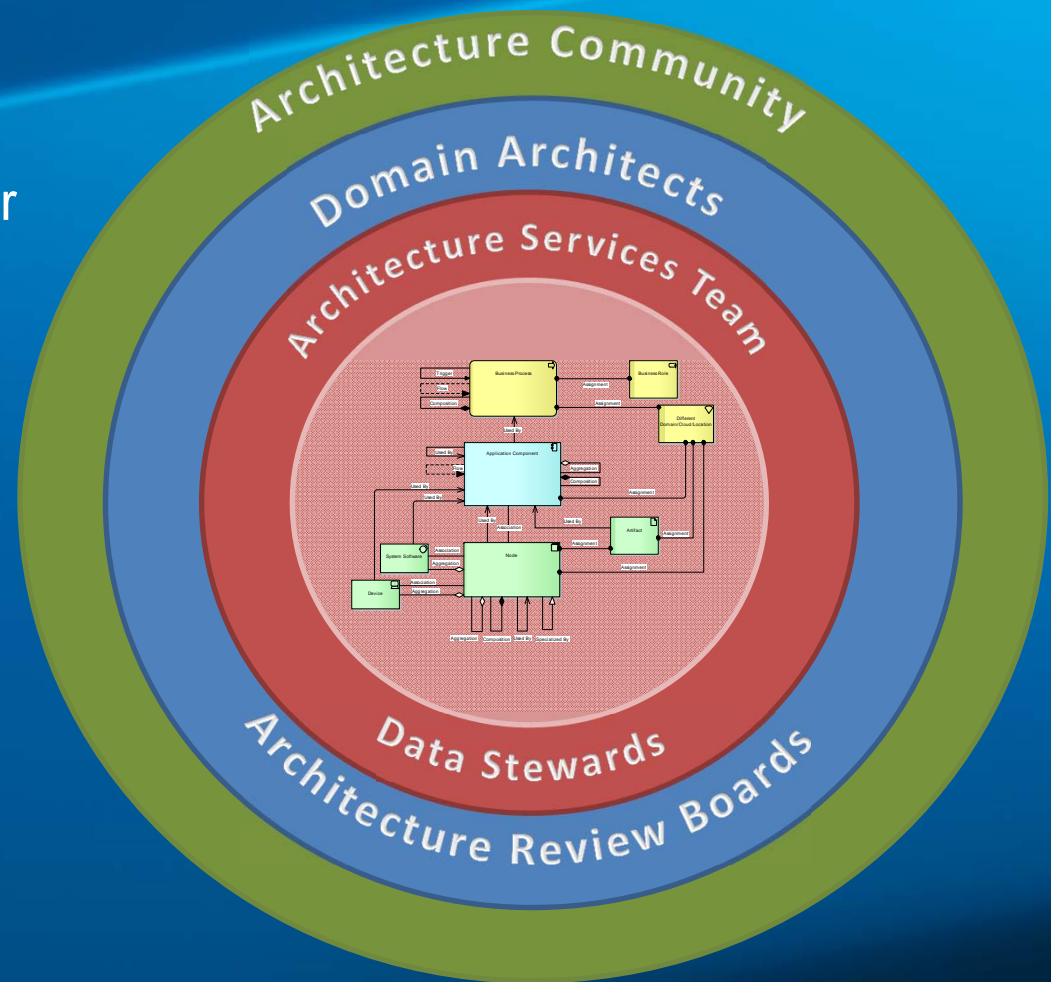


Meta-Model



Keeping It Fresh

- » Centralized responsibility for data quality and publishing
- » Ownership of information stays with the knowledge
- » Shared responsibility for currency



Lessons Learned

- » Know why you want Enterprise Architecture
- » Be mindful about how much you can manage
- » Build on existing foundation if possible
- » Establish taxonomy first
- » Establish information ownership and governance
- » It is about information, not about the tool
- » It is about people



Thank You



voytek.janisz@gmail.com



@VoytekTheEA

PROGRESSIVE